

## Duke's OceanFest: Sea & Surfing Pets

Duke's OceanFest is one of Hawaii's top events, celebrating the life of Duke Kahanamoku, Hawaii's Ambassador of Aloha who was known for his athletic contributions and was credited with pioneering the sport of surfing. The week-long Waikiki event, from 18 Aug, features a variety of ocean sports that were close

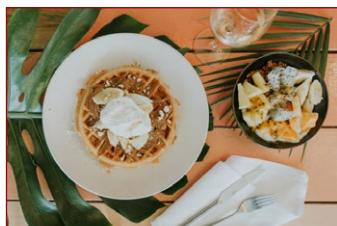


to Kahanamoku's life, such as long-board surfing, paddleboard racing, swimming, tandem surfing, surf polo, beach volleyball and stand-up paddle boarding.

Also notable during the festival is the Going to the Dogs SurFur Contest on 23 Aug, which in previous years has also featured surfing pigs and cats; and the Red Bull Party Wave on 26

Aug. The latter challenges teams to build their own surf vessel, dress up in costume and perform a skit before riding a wave together.

On land, the festival offers a Waikiki Nights on the Sand-Hawaiian Music and Movie event on 24 Aug, and the Great Hawaiian Legends Lu'au from at Waikiki Aquarium 25 Aug. See [dukesoceanfest.com](http://dukesoceanfest.com)



### Mother's Day

On 13 May Surfjack Hotel & Swim Club is featuring a Mother's Day brunch at Mahina & Sun's from 0900-1400. The restaurant will feature specially curated lunch menu highlighting local ingredients as well as a pop-up lei stand. See [Surfjack.com](http://Surfjack.com)

### Custom Poke Bowl

Four Seasons Resort Hualalai on the island of Hawaii is now offering a Build Your Own Poke Bowl station, an Avocado Toast station and Build Your Own Acai Bowl station says Hawaii Visitors & Convention Bureau. See [fourseasons.com/hualalai](http://fourseasons.com/hualalai)

### Spartan Race

Hawaii's largest premier obstacle course racing event is the Reebok Spartan Race Hawaii Trifecta Weekend, advises Hawaii Tourism. Held 25-26 Aug at Kualoa Ranch the weekend features three races, Ultra, Beast and Sprint, or clients can combine all three in the trifecta race. The race involves running through mud and water, crawling under barbed wire, jumping over fire and more. 2018 Hawaii Trifecta passes are USD325, to register click [HERE](#).

### Hawaii Volcano Update

The US National Park Service has closed parts of Hawaii Volcanoes National Park on Hawaii Island to the public due to latest Kilauea Volcano activity.

A 6400 hectare area from Kilauea Volcano's Pu'u 'O'o vent to the ocean is closed after more than 250 low magnitude earthquakes were registered within 24 hours earlier this week.

Hawaii Volcanoes National Park advises that the closed section is less than 5% off the actual park, and while the aforementioned area is currently off limits to hikers, it can still be viewed from the park's Jagger Museum overlook. For updates, [CLICK HERE](#).



### Cocktail Culture

Clients looking for a drink after a long day exploring the Hawaiian Islands have plentiful options to choose from. But for those looking for recommendations, SPG has created a list of its top three. At the Westin Maui clients are encouraged to try the award winning No Ka Oi Mai Tai, which is served with Maui pineapple and Cruzan rum. Alternatively clients at The Westin Ka'anapali are recommended the Poke Bloody Mary, blending mainland and Hawaiian essences, while those who would rather a wine can take advantage of Sheraton Kona's wine list, featuring wines from Hawaii, Napa Valley and Italy.

### Three Day Festival

Celebrating Japanese and Hawaiian culture together is the Pan Pacific Festival-Matsuri in Hawaii, held 08-10 Jun. Highlights of the event include a block party on the Fri evening (which attracted 40,000 people last year), a hula festival at the Ala Moana Center featuring Japanese hula hula and a grand parade along Waikiki's Kalakaua Avenue. See [pan-pacific-festival.com](http://pan-pacific-festival.com)



### Hapuna Transformation Completed

The Hapuna Beach Resort on Hawaii Island's Kohala Coast has undergone a USD46million transformation. Highlights include a re-designed lobby, reimagined guestrooms and suites, a new adults-only infinity pool with private cabanas and lounges as well as new and expanded dining. Prince Preferred members who book stays of four nights or more for travel by 22 Dec will qualify for 10,000 miles per stay. See [princepreferred.com](http://princepreferred.com)

## Aloha Hawaii LEI DAY FARES OUT NOW

### AKL to HNL

From **\$389** one way

Book Z class on Sale till 08 May. See GDS for details.

