

Hilton Opening New Waikiki Hotel



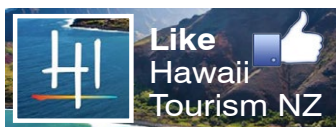
The World's largest Hilton Garden Inn is set to open in Waikiki next month.

The 623-room hotel has undergone a major USD115 million complete redevelopment and is located on Kuhio Ave, two blocks from Waikiki Beach. It is Oahu's first Hilton Garden Inn hotel and will sport an American bistro with seasonal produce from local farmers and a locally-owned café and market. The property also has no resort fee, but does offer free Wi-Fi, a fitness center and rooftop pool and bar. The property may be particularly suited to the Kiwi market as all rooms, including one-and two-bedroom suites will feature a microwave, mini-fridge,

coffee/tea maker, HDTV with premium channels, and free Wi-Fi. Most rooms will also include a walk-out lanai. Adjoining rooms are available—perfect for families or larger groups traveling together.

Hilton says the property will sport a lively, living room-style lobby with seating for lounging or relaxing while deciding how to spend the day. There's also a 24-hour business centre. See upcoming issues for more on the hotel's food and beverage offering (which includes the Holoholo Café and Market, a new store concept by Food Pantry, which will have a café, market and gift shop, featuring a wine and beer bar, coffee bar and Hawaii gifts).

Opening rates start from USD209 per night, with no resort fee for reservations from 27 Jun. Wholesalers have details or see hgiwaikikibeach.com



Mele Mei 2016

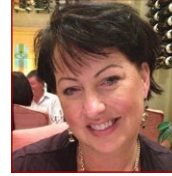
The 6th Annual Mele Mei Celebration (which runs through to 26 Jun) will feature some of Hawaii's best, including Na Hoku Hanohano award winning artists and Lifetime Achievement Award honorees. From ukulele to steel guitar, traditional Hawaiian music to slack key, island reggae to rock-and everything in between—Mele Mei events are being held across the island group over the coming weeks. For details, see melemei.com

Big Island Coffee Fest

The Kau Coffee Festival is being staged on Hawaii Island 13-22 May. The line-up includes a recipe contest, water systems hike, star-gazing, farm tours and more. There's also an all-day celebration 21 May with Hawaiian hula and music; craft, coffee and food booths; guided coffee tasting and activities to the kids. Some events are free and others have a fee. See kaucoffeefest.com

HA Agent Winner

Sandra Ivelja from You Travel Mairangi Bay is the winner of 100,000 Hawaiian Airlines HA Miles in the carrier's latest trade promotion. Ivelja says she's 'so excited' about the win as it's been 'a hot destination for quite some time now for many of my clients'.



She's now planning a trip to Hawaii this year and hopes to visit some of the neighbour islands, 'perhaps the Big Island or Kauai as an option for some of my clients that have only explored Oahu and Maui as there is so much more to Hawaii than just Honolulu'.

"I am a huge supporter of Hawaiian Airlines especially because of their generous luggage allowance...I'd better start saving!"



Waikiki Sweet Treats

Japanese pastry shop Kulu Kulu is next week opening a store at Waikiki's Royal Hawaiian Center—including a soft serve ice-cream offering. The Maui Vanilla Bean from Maui and Kona Coffee soft-serve flavours are expected to be a hit, says the company. The outlet will also feature Honolulu Bake Shop by Kulu Kulu with Maui Vanilla Custard Pudding and Kona Coffee Pudding; Honolulu Banana mini dessert omelettes; and jelly drinks. The store is part of the expansion of the centre's food court.



New Ukulele Experience At Cultural Centre

Oahu's Polynesian Cultural Center has opened the Ukulele Experience, a new attraction which is part museum and part musical showcase dedicated to Hawaii's state instrument. The exhibit features tours showing how the ukulele is crafted, as well as photos, art and a ukulele gallery.

"The Ukulele Experience is a beautiful new exhibit that showcases the history, the woodworking, the artistry and the significance of the ukulele to Hawaii's culture, and to everyone who enjoys its music," says PCC chief executive Alfred Grace. The exhibit has been designed to appeal to all ages, residents and visitors alike. "All you need is an appreciation for music and a love for Hawaii," adds Grace. The experience also includes a Keiki Studio, where children to learn about the instrument and some and basic chords. The PCC will be attending Aloha Down Under in Auckland and Wellington next week.

ALOHA WAIKIKI!

AKL-HNL **\$1079*** Return
from (Children from \$849 return)

* Book K class. See GDS for details. Sales until 24 May.



HAWAIIAN AIRLINES