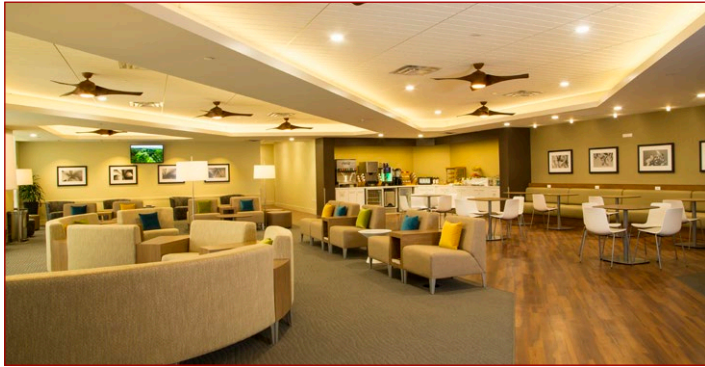


## Upgrades Improve HNL Experience



Upgrades are continuing at Honolulu Airport as a growing number of Kiwi travellers head to and through the state's airport.

Later this year more than 30 automated passport control kiosks



### Lego Island Style

The National Tropical Botanical Garden's McBryde Garden on Kauai is set to host Nature Connects: Art with Lego for the first time in Hawai'i. More than 350,000 Lego bricks will go on display in the exhibit which will be open 08 May-10 Jul. The traveling exhibit by artist Sean Kenney features 14 nature-themed sculptures and will be on at the National Tropical Botanical Garden (NTBG) flagship garden on Kauai this spring. See [ntbg.org](http://ntbg.org)

(similar to SmartGate) are set to be installed in HNL's arrivals terminal. It's a move that is expected to substantially reduce the wait for arriving international passengers. The USD1.7 million initiative is hoped to reduce the average time taken to clear passport control from 30 minutes to 20 minutes.

*Travel Today* understands that travellers who have visited the US within the last eight years will be eligible to use the machines as well as US nationals.

At the same time improvements to rental car facilities, new air gates and a bathroom refurb are planned, along with the general modernisation of the airport, its restaurants and concessions. The additional air gates are also hoped to reduce some of the peak time congestion at the airport.

### ... HNL Tips

For clients looking to expedite their departure from HNL, remind them that they can use Hawaiian Airlines' international check-in kiosks (rather than joining the queue for traditional check-in). And those looking for an oasis of calm pre-flight now also have the option of the pay-per-use Plumeria Lounge (pictured above). Casual entry is USD40pp. [CLICK HERE](#)

### Inaugural Silent Disco

Honolulu will stage its first silent disco, where party-goers can dance to music broadcast to wireless headphones. The first 500 guests to AR-AfterDARK at the Honolulu Museum of Art on 26 Feb can pick up a headset at the entrance, and use them to tune into three different DJ stations. The headsets light up in three colours (blue, green, and red) each corresponding to a DJ's audio channel. Cost is USD25. See [artafterdark.org](http://artafterdark.org)

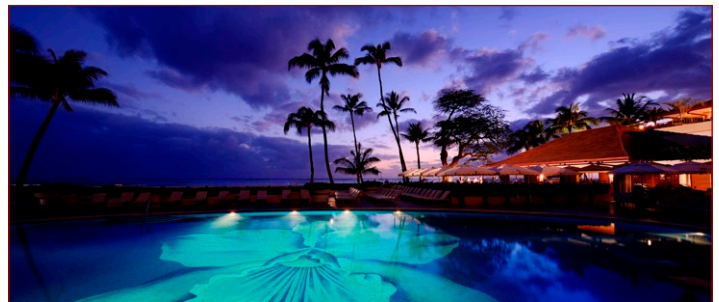
### Four Seasons Ko Olina

Four Seasons Resort Oahu at Ko Olina is now accepting early reservations for stays from 01 Jun. The Oahu resort's 358 ocean- and lagoon-view guest rooms and 52 suites will each feature a private lanai and authentic Hawaiian-style décor. There's also five restaurants and lounges, four pools, a multi-level spa and wellness centre, tennis facilities and multiple watersport activities. The hotel is set to open in the northern Spring. See [fourseasons.com/oahu](http://fourseasons.com/oahu)



### Modern Noodle Bar

Honolulu's acclaimed Koko Head Café chef Lee Anne Wong has opened her second Oahu restaurant. Hale Ohuna is pitched as a modern Hawaiian noodle bar, with an emphasis on made-from-scratch noodle dishes featuring local ingredients. It is also home to Honolulu's first sake and whisky lounge. Located in Honolulu's Kaimuki district, the restaurant is only open for dinner. See [haleohuna.com](http://haleohuna.com)



### Live Well In Waikiki With Halekulani

Iconic Waikiki property the Halekulani is increasing its focus on well-being packages with the expansion of its Living-Well Program. The SpaHalekulani is now offering a series of hour-long, wellness-themed lectures led by in-house Lifestyle Coach, Kamala Skipper. In addition, the programme has a new cleanse and body treatment package.

The lectures are free for hotel guests and take place every third Thu of the month. Each month will cover a different topic, and those not staying at the hotel can attend for USD25 (which can be used as a spa credit).

SpaHalekulani has also launched a new Surface to Center body treatment, which includes a dry exfoliation, lymphatic techniques and features the Scientific Organic skin care product line. It is USD175 for 50 minutes. For details, see [halekulani.com/living-well-lecture-series](http://halekulani.com/living-well-lecture-series)

# AKL → HNL

From **\$1039\*** pp

\* Sales to 12 Feb. Book in L class. Refer GDS for details.



**HAWAIIAN**  
AIRLINES